



# Diamond Tub & Showers Spec Sheet

Model: SHTLT 623676 R/L

Description: One Piece Tiled Handicapped Shower with Low Threshold

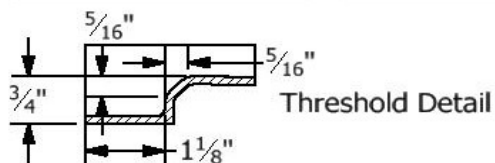
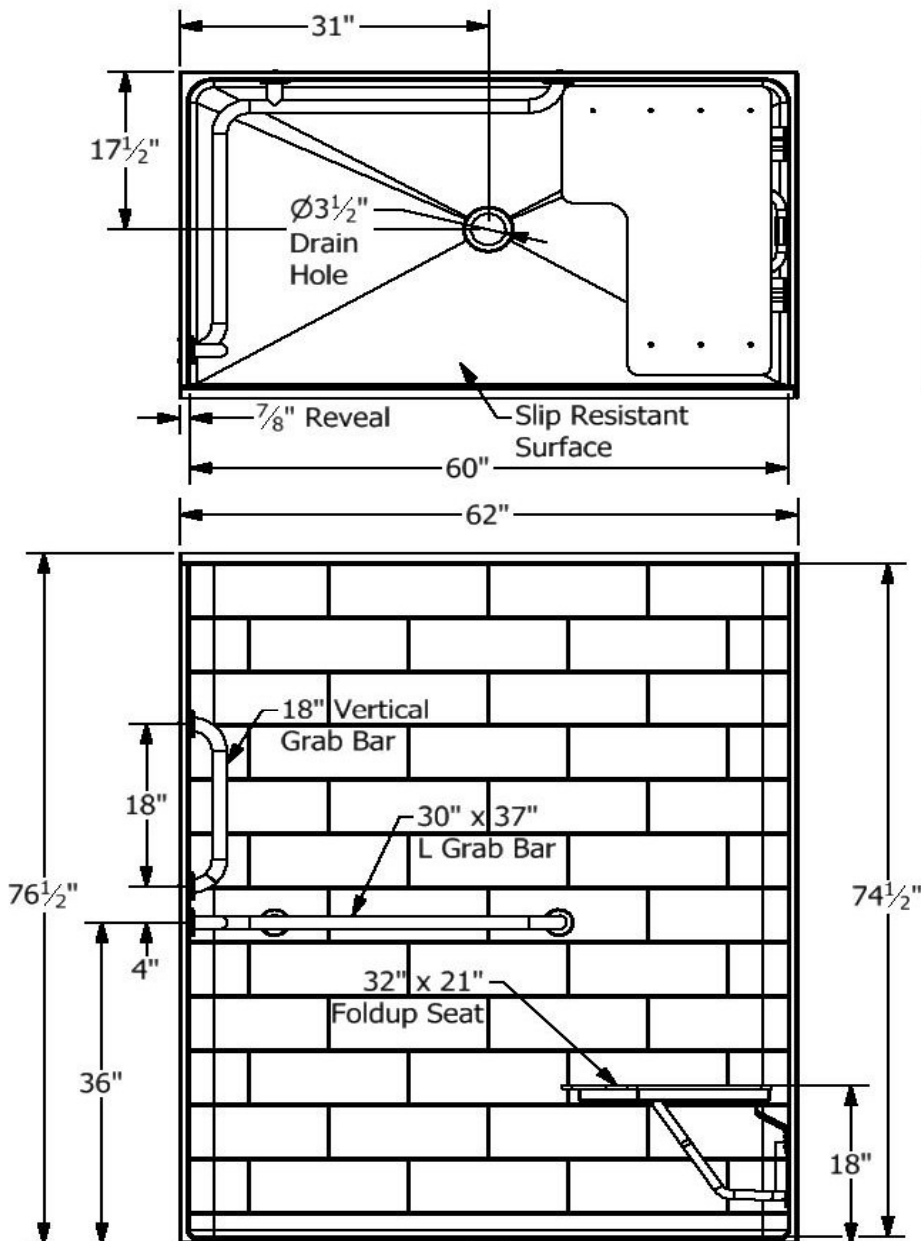
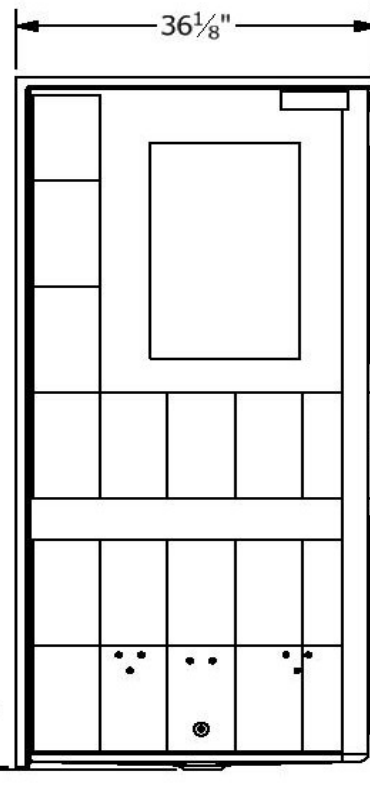
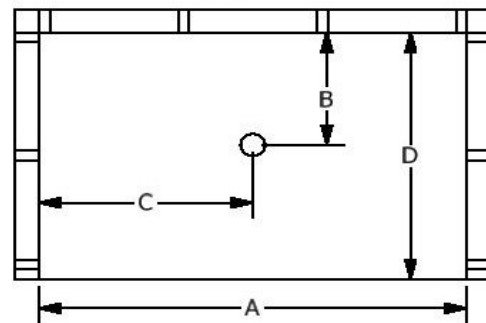
## Specifications

Model #	Material	Wall Finish	Pieces	Drain	Threshold Height	Net Weight Lbs.
SHTLT 623676	Fiberglass/Gelcoat	Tiled	1	C	3/4"	
Enclosure Opening						
Width	Height					
60"	74 1/2"					

## Framing Dimensions

A	B	C	D
62"	17 1/2"	31"	36"

## Framing Specifications



Certified to conform to ANSI Z124.1 and ASTM E- 162 Flame Spread Rating 200 or less and is under a program of factory

Manufactured by Frontline Mfg., Inc. Warsaw, IN  
 ICC ES PMG 8/31/20