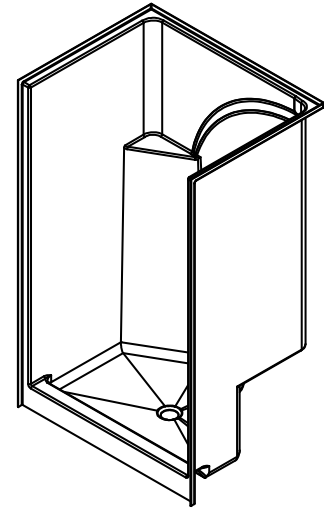
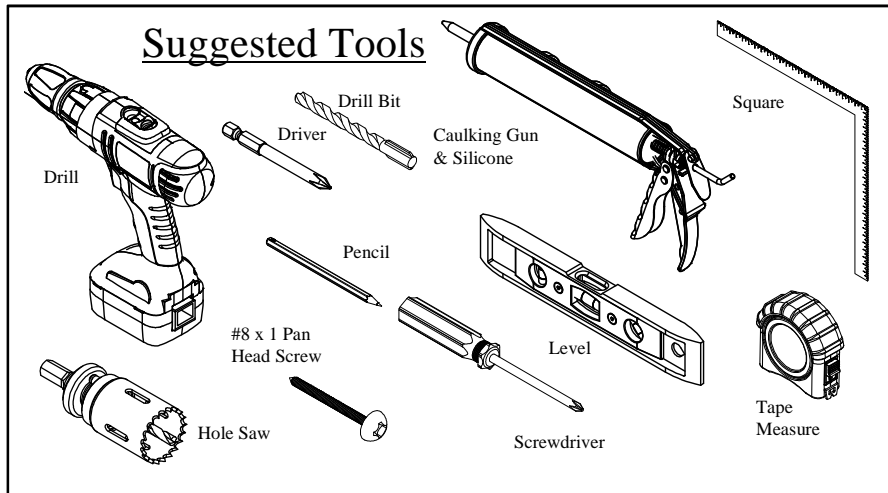




Diamond Shower Installation Instructions



- 1) Shower unit should be on site before framing the walls. Studs may have to be temporarily removed to get the shower moved into place.
- 2) Level and square studs and floor. Note that if support legs are on bottom they should not touch the floor when model is installed. They are only there for shipping purposes. Check Spec Sheet for rough-in dimensions. Dry fit shower once this is done to ensure proper fit .(Fig. 1 & 2)
- 3) Check the drain location at this time. Mark subfloor for drain location and cut around drain for access (Fig. 2).

Note: No additional materials are required to support bottom of shower.

- 4) A code approved drain outlet should be used. Be sure to use silicone or plumber's putty between the chrome flange and the finish side of the shower. Measure and cut access for drain. (Fig.3)
- 5) Layout the holes for the shower valve, shower head, and any other supply lines. Note that your plumbing should already be fastened at this time. Slide the shower back into the alcove. Measure and mark location of the shower valve. If shower head will be located on the shower itself, mark for this hole as well. Drill a small hole at these locations and slide the shower back into the alcove. If the small holes line up, cut the larger holes in with a hole saw. Refer to the manufacturer's instructions for this. (Fig. 4 & 5)
- 6) After unit is positioned in framed area, check level of shower and make sure that apron is tight down on the floor. (Fig. 6, 7, & 8)
- 7) While unit is level, start securing the top flange to studs. It is recommended that holes be pre-drilled. Then install screws all along the front vertical flanges on 8" centers. Use #8 x 1" pan head screws. (Fig. 9, 10, & 11)
- 8) Install plumbing hardware (shower valve, shower head, and drain) at this time as per manufacturer's instructions. (Fig. 12)
- 9) If drywall finish is to be used, place drywall over fastening flange, screw drywall into the studs. Mud, tape and finish. Run a bead of silicone around perimeter of part and bottom of apron. (Fig. 12 & 13)
- 10) Towel bars and grab bars may be bolted or screwed into the shower unit as long as adequate backing is on the backside prior to installation. It is recommended that a minimum of 7/16" OSB or equivalent be used. Check when installing grab bars so that all applicable codes are followed.
- 11) Upon finishing construction, the unit can be cleaned up with warm water and mild detergent. Most other marks can be removed without damage by the use of acetone. The use of acetone may require light buffing with a chamois to restore shine.

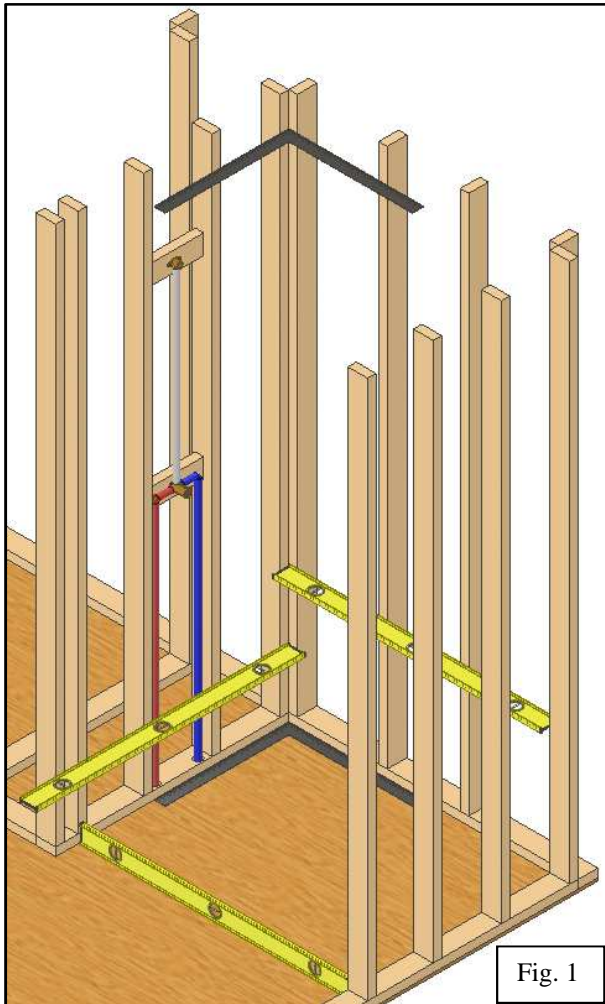


Fig. 1

Leveling and squaring the walls and floor

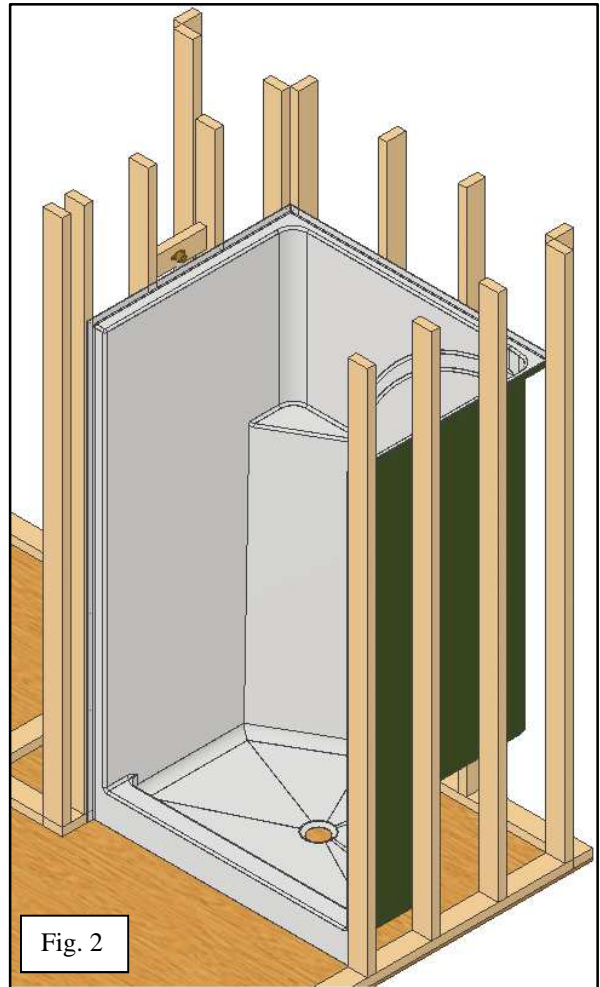


Fig. 2

Dry fit shower to check fit.

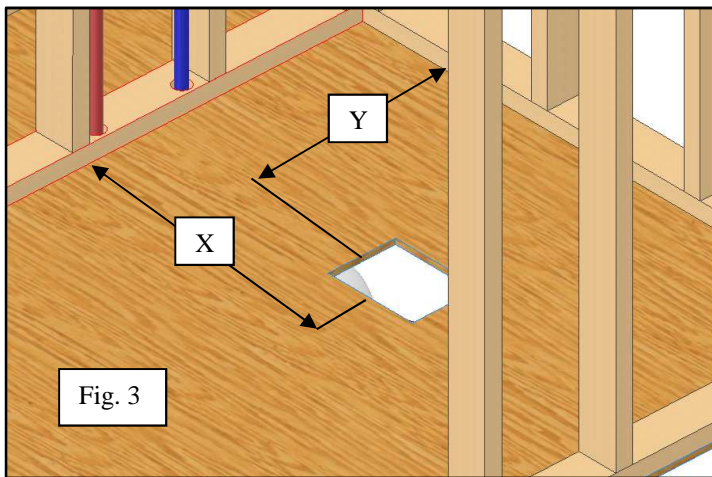


Fig. 3

Measure and cut access hole for drain.

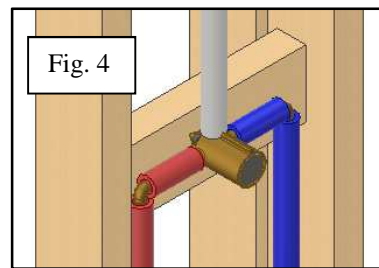


Fig. 4

Shower Valve

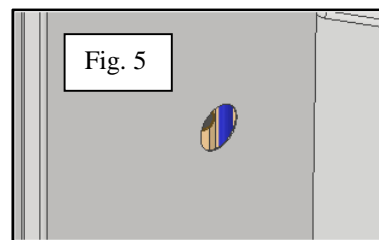


Fig. 5

Clearance Hole for Valve

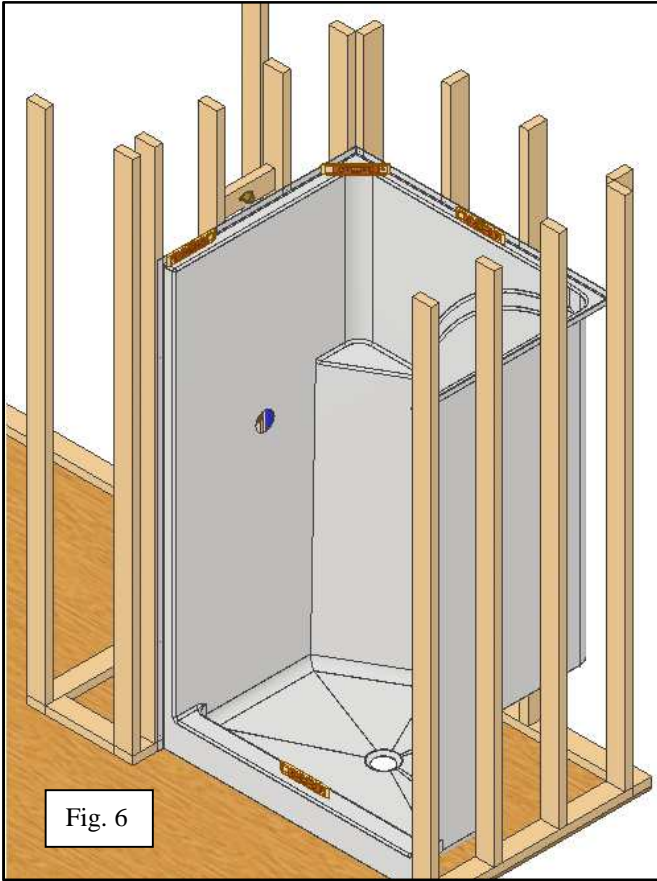


Fig. 6

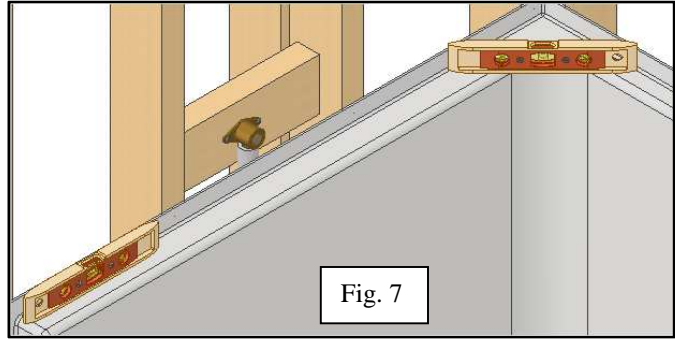


Fig. 7

Check level on Side walls, back wall, and apron

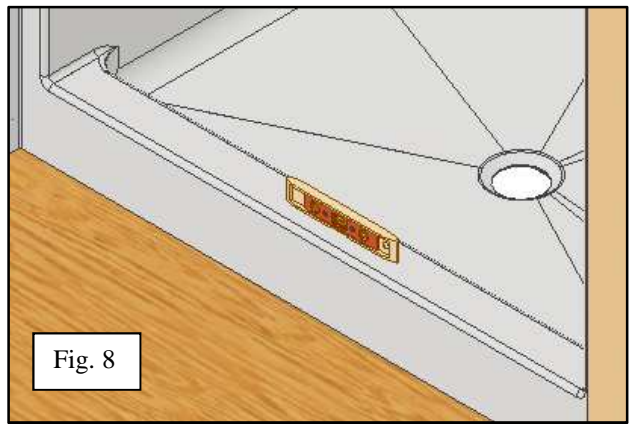


Fig. 8

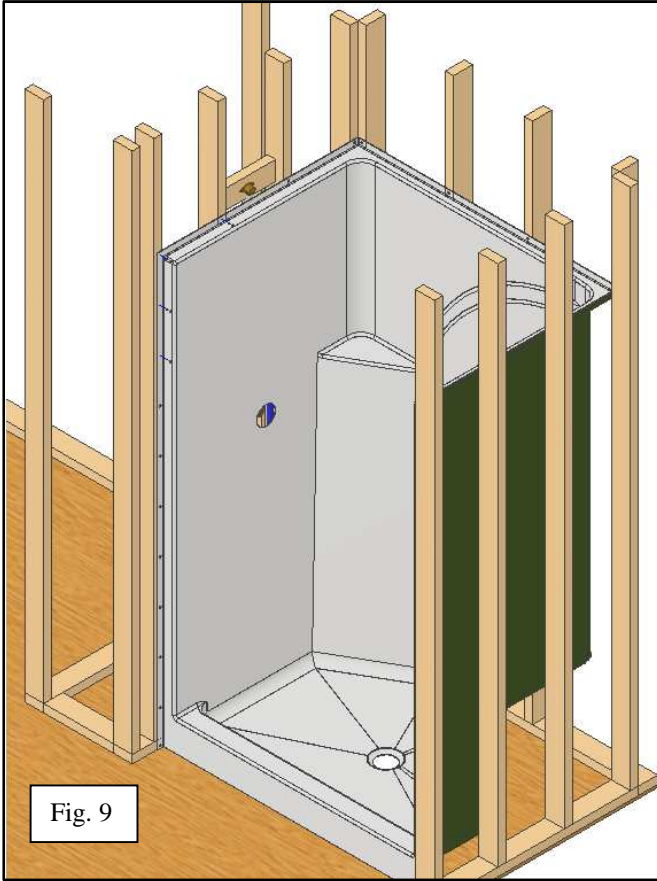


Fig. 9

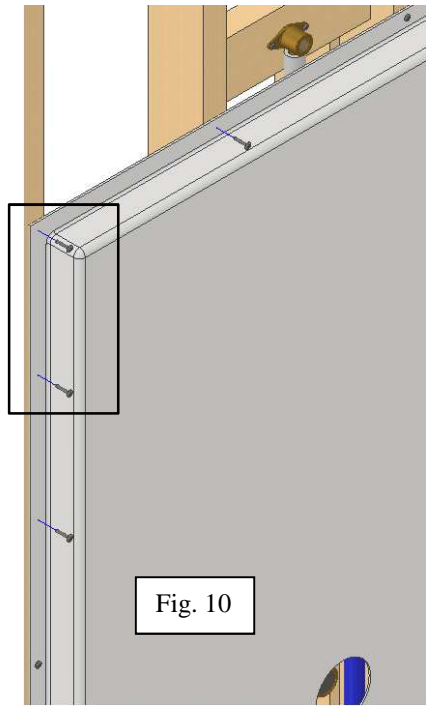


Fig. 10

Slide unit back into alcove. Keeping it leveled, screw flange to studs.

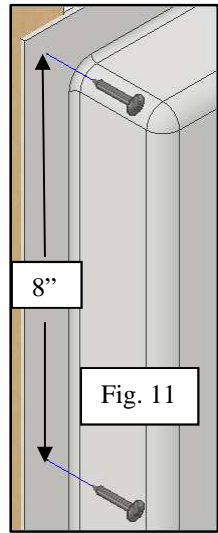
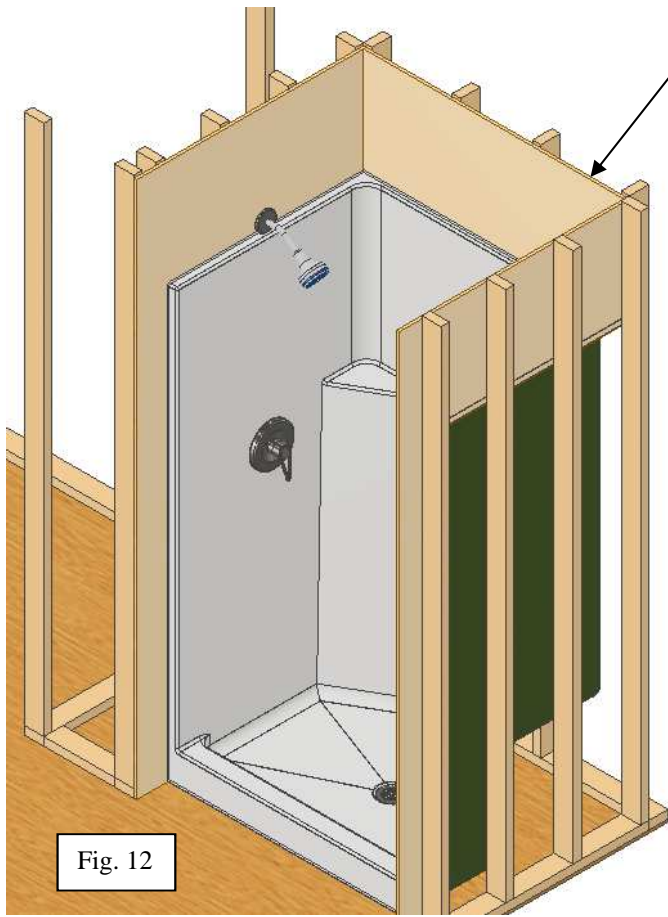
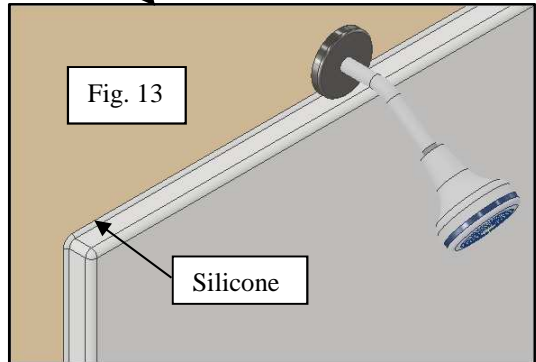


Fig. 11

Secure flange to edges with #8 x pan head screws. On front vertical flanges secure screws on 8" centers



Drywall



Install wall board (drywall) at this time. Run a bead of silicone caulking around perimeter of part and along bottom of the apron.